

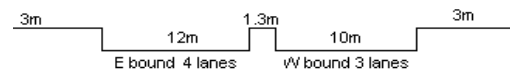
YEAR 2016

COVERAGE (B) STATION 4217

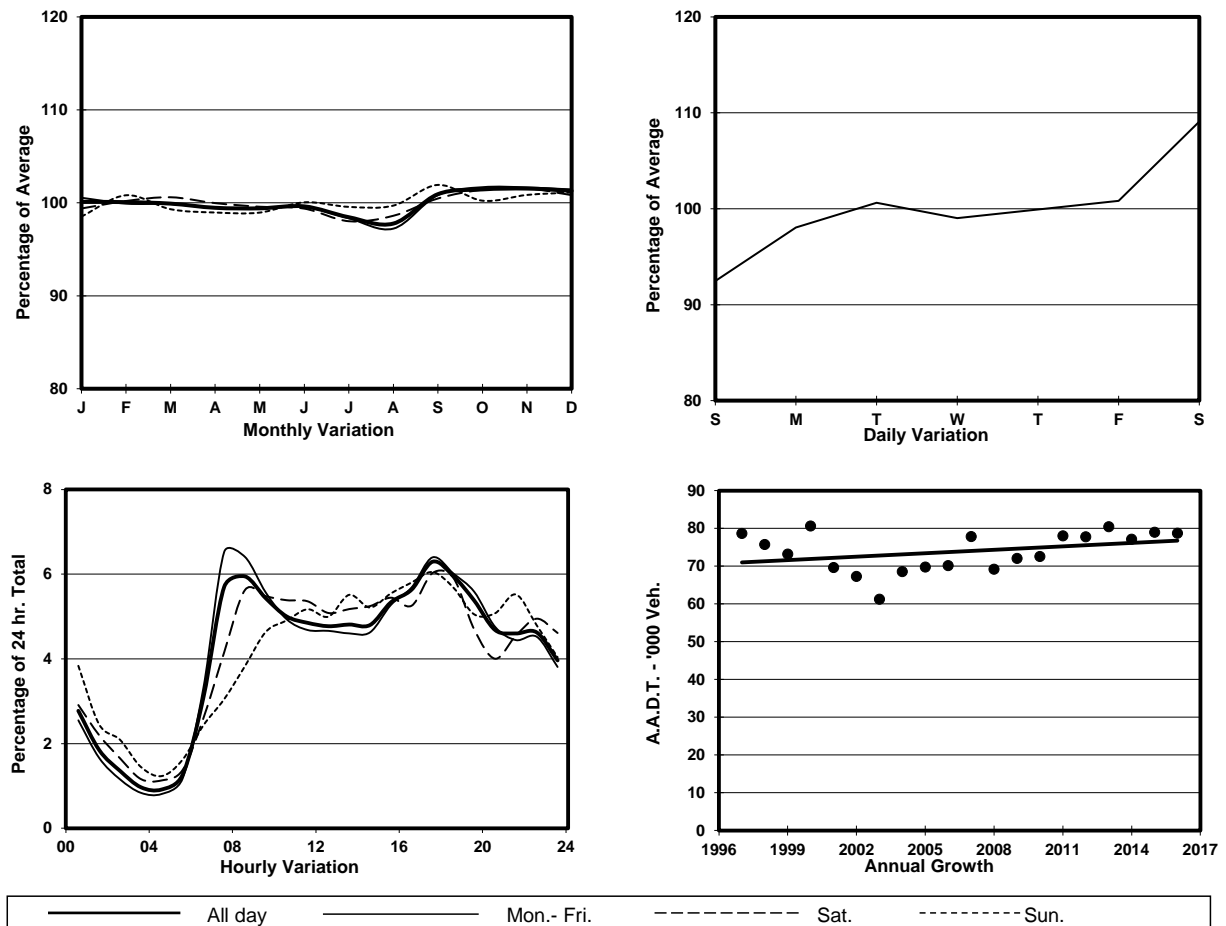
ROAD NETWORK MAJOR

ROAD TYPE PRIMARY DISTRIBUTOR

LINK CLEAR WATER BAY RD (from LUNG CHEUNG RD to  
NEW CLEAR WATER BAY RD WESTERN JUNCTION)



## 1. TRAFFIC FLOW VARIATION AND GROWTH



## 2. TRAFFIC CHARACTERISTICS (BY DIRECTION)

Parameter	All - Day	Mon. - Fri.	Sat.	Sun.
<b>EAST BOUND</b>				
A.A.D.T.	44300	44570	48150	40320
R 12 / 24 - %	62.1	63	61.5	57.8
R 16 / 24 - %	83.4	84.5	81.4	79.8
AM Peak Hour	0800-0900	0700-0800	0800-0900	0900-1000
One-way flow at AM peak hour	2390	2650	2670	1790
T - % (AM)	-	9	-	-
PM Peak Hour	1800-1900	1800-1900	1700-1800	1600-1700
One-way flow at PM peak hour	2850	3050	2880	2410
T - % (PM)	-	6.4	-	-
Prop.of commercial vehicles - 16 hr.	-	9.1	-	-
<b>WEST BOUND</b>				
A.A.D.T.	34420	34220	38030	32730
R 12 / 24 - %	67.7	68.5	67.5	63.7
R 16 / 24 - %	84.3	84.9	83.6	82.1
AM Peak Hour	0800-0900	0800-0900	0800-0900	0900-1000
One-way flow at AM peak hour	2290	2510	2180	1600
T - % (AM)	-	6.9	-	-
PM Peak Hour	1700-1800	1700-1800	1800-1900	1700-1800
One-way flow at PM peak hour	2260	2290	2470	2130
T - % (PM)	-	9.3	-	-
Prop.of commercial vehicles - 16 hr.	-	8.8	-	-

## 3. OTHER INFORMATION AND COMMENT

**4. Vehicle classification and occupancy - Monday to Friday**

Time		Class of vehicle									
		Motor	Private	Taxi	Private	PLB	Goods veh.		Non	Fr. Bus	
		Cycle	Car		LB		Light	M & H	Fr. Bus	SD	DD
0700-0800 Peak hour	Pro	4.9	45.8	14.6	2.6	12.4	10.8	2.4	2.7	0.1	3.8
	Ocp	1.1	1.5	1.9	8.4	12.3	1.6	1.1	12.7	16.0	50.0
0800-0900	Pro	4.3	50.2	13.4	2.5	9.9	12.1	2.5	2.0	0.1	3.0
	Ocp	1.1	1.4	1.9	5.9	13.4	1.5	1.3	10.6	45.0	48.9
0900-1000	Pro	2.3	38.6	16.4	2.8	11.1	17.5	4.8	2.7	0.1	3.9
	Ocp	1.0	1.4	2.0	2.3	12.4	1.5	1.1	14.7	3.0	23.4
1000-1100	Pro	2.9	39.5	19.9	0.9	10.4	18.2	2.8	1.4	0.1	3.9
	Ocp	1.2	1.4	1.9	2.6	11.8	1.4	1.2	1.6	9.0	23.8
1100-1200	Pro	1.3	38.7	18.1	2.4	10.8	16.5	4.5	3.4	0.1	4.2
	Ocp	1.0	1.4	1.8	1.9	11.1	1.5	1.1	9.5	17.0	21.2
1200-1300	Pro	1.9	38.4	19.6	4.9	9.9	15.4	3.2	2.9	0.0	3.9
	Ocp	1.1	1.6	1.8	5.8	11.2	1.6	1.4	11.1	0.0	22.1
1300-1400	Pro	4.1	35.1	18.5	1.3	9.1	19.5	6.3	1.9	0.1	4.3
	Ocp	1.1	1.4	2.1	2.4	11.0	1.5	1.4	12.0	14.5	22.3
1400-1500	Pro	2.4	35.9	20.3	1.5	10.0	19.2	5.2	1.7	0.0	3.9
	Ocp	1.1	1.5	1.9	2.5	10.6	1.5	1.3	16.8	0.0	24.1
1500-1600	Pro	2.0	37.5	18.8	3.7	8.4	16.7	6.5	2.7	0.1	3.8
	Ocp	1.0	1.5	1.9	5.7	12.4	1.6	1.2	13.4	13.0	26.2
1600-1700	Pro	1.7	38.2	20.2	3.9	9.2	14.2	4.4	4.5	0.0	3.8
	Ocp	1.2	1.5	1.9	5.0	12.6	1.6	1.1	5.4	0.0	36.2
1700-1800	Pro	2.8	42.6	18.0	3.7	10.4	14.1	2.5	2.3	0.1	3.6
	Ocp	1.1	1.6	2.0	4.4	13.1	1.4	1.3	5.8	20.0	40.8
1800-1900	Pro	5.2	53.6	15.3	0.6	10.9	8.1	1.4	1.1	0.1	3.8
	Ocp	1.1	1.4	2.0	1.5	13.9	1.5	1.1	12.9	17.0	50.2
1900-2000	Pro	2.2	52.7	18.8	0.1	13.7	6.9	1.0	1.1	0.1	3.6
	Ocp	1.0	1.5	1.9	1.0	10.5	1.3	1.0	7.7	15.0	30.9
2000-2100	Pro	2.3	46.0	25.7	0.1	12.5	6.9	0.9	0.7	0.0	5.0
	Ocp	1.1	1.6	1.8	1.0	9.4	1.4	1.1	1.3	0.0	22.2
2100-2200	Pro	4.8	41.0	28.1	0.1	12.8	7.6	1.4	0.0	0.1	4.2
	Ocp	1.1	1.5	1.9	2.0	9.9	1.3	1.2	0.0	15.0	23.4
2200-2300	Pro	4.0	46.6	26.0	0.1	14.6	3.1	1.2	0.1	0.1	4.1
	Ocp	1.1	1.6	1.8	1.0	9.7	1.5	1.0	1.0	9.5	24.4
16 hours	Pro	3.1	43.1	19.0	2.0	11.0	12.9	3.1	2.0	0.1	3.9
	Ocp	1.1	1.5	1.9	4.7	11.6	1.5	1.2	10.0	15.1	31.3

**Legend**

**Pro.** Proportion of vehicles in % (Sum may not add up to 100% due to figure rounding)\*

**Ocp.** Average occupancy of vehicles including both driver and passengers\*

**M&H** Medium and Heavy

\* All traffic data are collected from combined bounds except for one way traffic